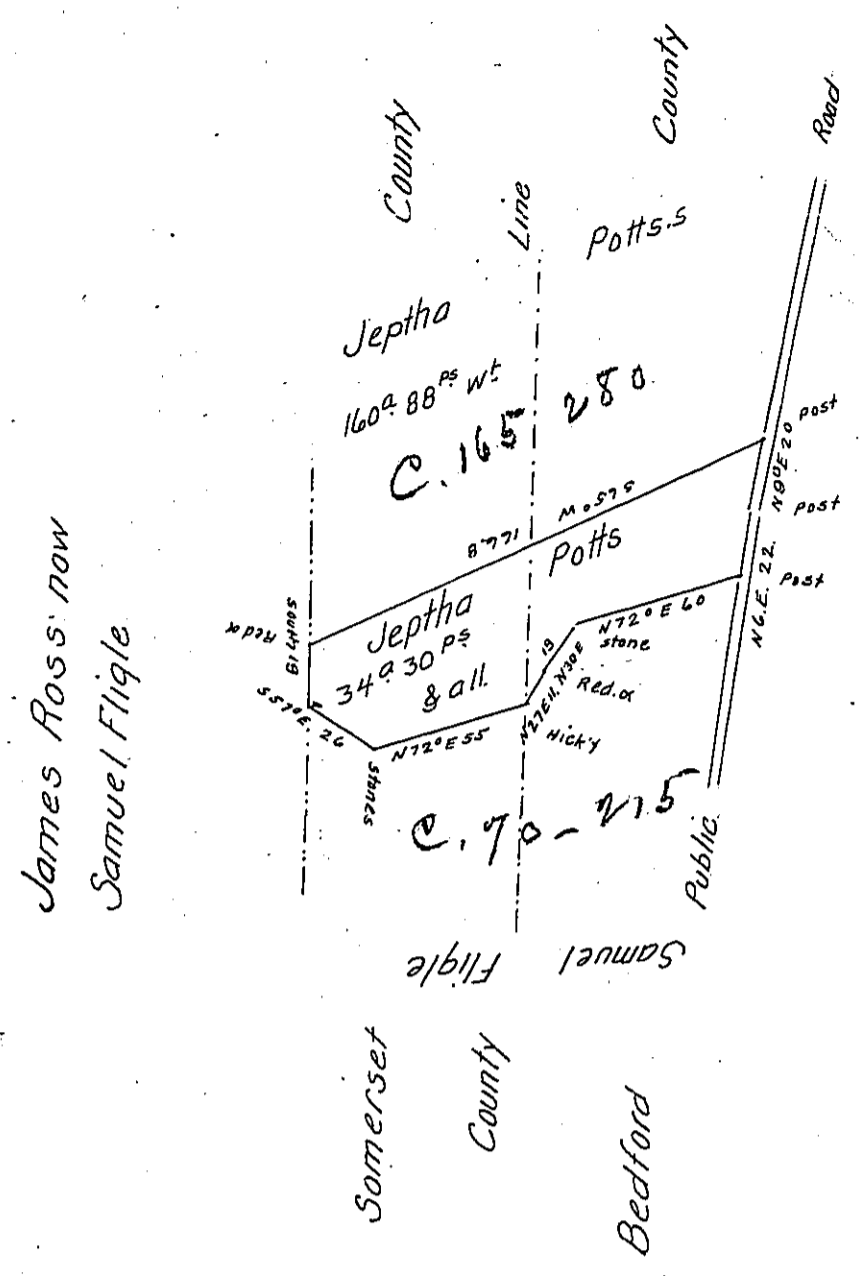


FORM NO. 1.



Draft of a tract of land. Containing 34 acres and 30 perches And Allowance of six pr. Ct. for roads &c. Situate in Napier township Bedford County And Shade township Somerset County. Pennsylvania Surveyed the 25th day of November A. D. 1868, in pursuance of a Warranted granted to Jeptha Potts dated the 16th day of September A. D. 1868.

Samuel Ketterman (C.S)

To J. M. Campbell Esq
S.G.

W^m M. Schrock
Somerset Co.

I hereby Certify that the foregoing is a Correct Copy of a Survey filed amongst the records of the County Surveyors Office of this County. And that it has been examined by me and I find ^{that} it contains 34 acres 30 perches & alle. instead of 33° 139 perches as the records represent. 3rd Moth 25th 1872.

To J. M. Campbell.
S.G.

Hiram Blackburn
C.S.

IN TESTIMONY that the above is a copy of the original remaining on file in the Department of Internal Affairs of Pennsylvania, made conformably to an Act of Assembly approved the 16th day of February, 1833, I have hereunto set my Hand and caused the Seal of said Department to be affixed at Harrisburg, this eighth day of June 1906.

Loac D Brown
Secretary of Internal Affairs.